

## Lampiran 2 SURAT IZIN PENELITIAN



KEMENTERIAN AGAMA REPUBLIK INDONESIA  
UNIVERSITAS ISLAM NEGERI  
K.H. ABDURRAHMAN WAHID PEKALONGAN  
FAKULTAS TARBIYAH DAN ILMU KEGURUAN  
Jalan Pahlawan KM. 5 Rowolaku Kajen Kab. Pekalongan Kode Pos 51161  
www.ftik.uingusdur.ac.id email: ftik@uingusdur.ac.id

Nomor : B-1297/Un.27/J.II.1/06/2024

25 Juni 2024

Sifat : Biasa

Lampiran : -

Hal : Izin Penelitian

Yth. Kepala MAN 1 Kota Pekalongan  
Di Tempat

Assalamu'alaikum Wr. Wb.

Diberitahukan dengan hormat bahwa:

Nama : Gyan Aulia Palupi  
NIM : 2120171  
Jurusan/Prodi : Pendidikan Agama Islam  
Fakultas : Tarbiyah dan Ilmu Keguruan

Adalah mahasiswa Universitas Islam Negeri K.H. Abdurrahman Wahid Pekalongan yang akan melakukan penelitian di Lembaga/Wilayah yang Bapak/Ibu Pimpin guna menyusun skripsi/tesis dengan judul

**"PENGARUH PROGRAM BELAJAR MANDIRI BOARDING SCHOOL TERHADAP MINAT BELAJAR SISWA DI MAN 1 KOTA PEKALONGAN"**

Sehubungan dengan hal tersebut, dimohon dengan hormat bantuan Bapak/Ibu untuk memberikan izin dalam wawancara dan pengumpulan data penelitian dimaksud.

Demikian surat permohonan ini disampaikan, atas perhatian dan perkenannya diucapkan terima kasih.

Wassalamu'alaikum Wr. Wb.



a.n.Dekan

Ditandatangani Secara Elektronik Oleh:



Dr. Ahmad Ta'rifin, M.A.  
NIP. 197510202005011002

Ketua Program Studi Pendidikan Agama  
Islam

### Lampiran 3 SURAT BUKTI PENELITIAN



**KEMENTERIAN AGAMA REPUBLIK INDONESIA**  
**KANTOR KEMENTERIAN AGAMA KOTA PEKALONGAN**  
**MADRASAH ALIYAH NEGERI 1**  
Jalan Jenderal Urip Sumoharjo Pekalongan 51111  
Telepon (0285) 421059; Faksimili (0285) 421059;  
Website: www.man1kotapekalongan.sch.id

### SURAT KETERANGAN

Nomor : 781 /Ma.11.34.01/PP.00.6/07/2024

Yang bertanda tangan di bawah ini Kepala MAN 1 Kota Pekalongan :

Nama : Mimbar, S.Pd., M.Pd.  
NIP : 196608171993031003  
Jabatan : Kepala MAN 1 Kota Pekalongan

menerangkan dengan sesungguhnya bahwa :

Nama : Gyan Aulia Palupi  
NPM : 2120171  
Fakultas : Fakultas Tarbiyah dan Ilmu Keguruan  
Program Studi : Pendidikan Agama Islam (PAI)  
Universitas : Universitas KH. Abdurrahman Wahid Pekalongan

Telah Melaksanakan Tugas Penelitian di MAN 1 Kota Pekalongan pada tanggal 15 Mei – 10 Juli 2024 dengan judul "**Pengaruh Program Belajar Mandiri Boarding School Terhadap Minat Belajar Siswa MAN 1 Kota Pekalongan**" dan Guru Pembimbing Abdul Mudjib, S.Ag., M.Pd.

Demikian surat keterangan ini dibuat dengan sebenarnya, untuk dapat digunakan sebagaimana mestinya.

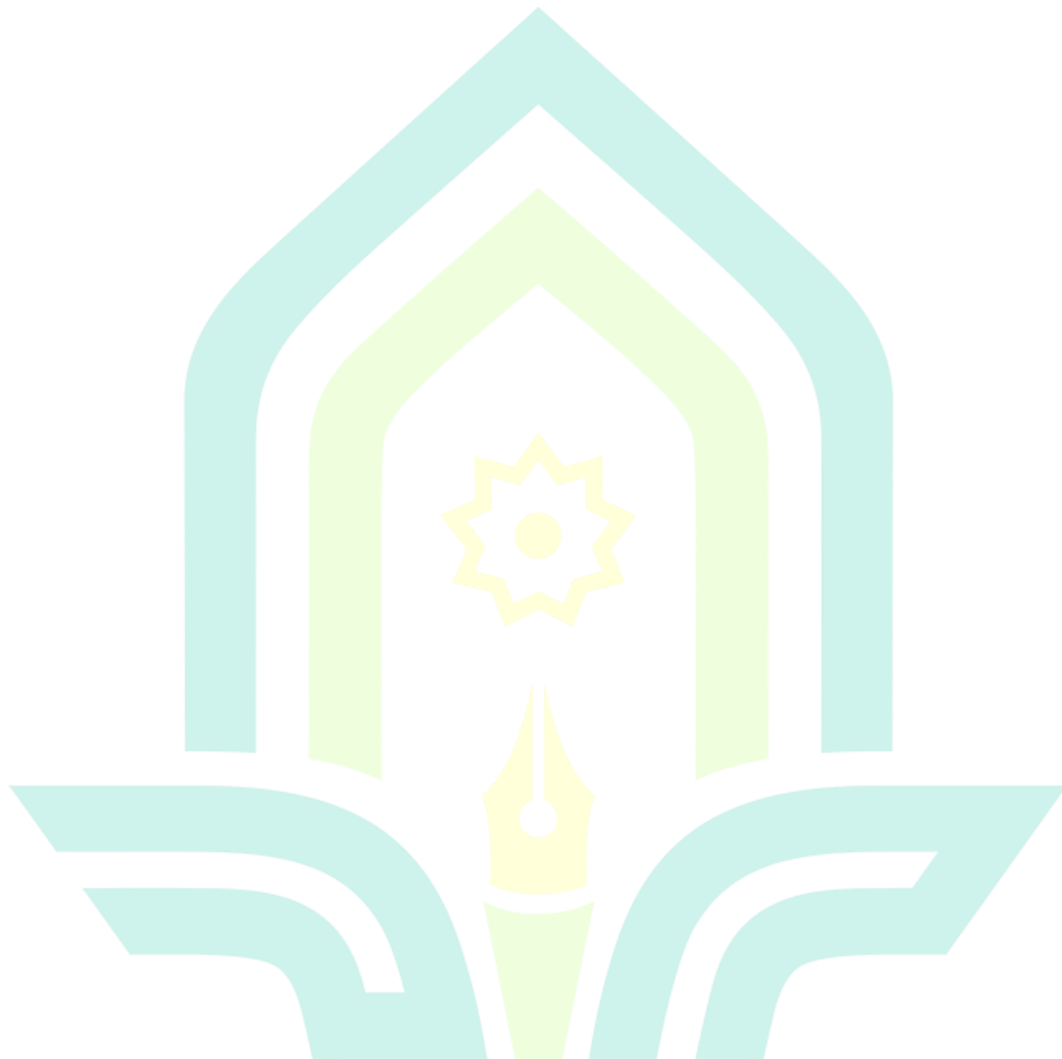
Pekalongan, 04 Juli 2024  
Kepala,  
  
Mimbar



Lampiran 4 UJI DESKRIPTIF

**Descriptive Statistics**

	N	Minimum	Maximum	Mean	Std. Deviation
X	69	22	50	39.01	5.712
Y	69	22	50	36.99	6.232
Valid N (listwise)	69				





	Sig. (2-tailed)	.006	.031	.073	.004	.018		.000	.000	.006	.088	.000
	N	69	69	69	69	69	69	69	69	69	69	69
X7	Pearson Correlation	.338*	.356*	.354*	.322*	.308*	.853*	1	.557*	.348*	.232	.723**
	Sig. (2-tailed)	.005	.003	.003	.007	.010	.000		.000	.003	.055	.000
	N	69	69	69	69	69	69	69	69	69	69	69
X8	Pearson Correlation	.456*	.294*	.414*	.303*	.365*	.525*	.557*	1	.285*	.303*	.680**
	Sig. (2-tailed)	.000	.014	.000	.011	.002	.000	.000		.018	.011	.000
	N	69	69	69	69	69	69	69	69	69	69	69
X9	Pearson Correlation	.212	.086	.125	.281*	.173	.327*	.348*	.285*	1	.758*	.526**
	Sig. (2-tailed)	.081	.484	.308	.019	.154	.006	.003	.018		.000	.000
	N	69	69	69	69	69	69	69	69	69	69	69
X10	Pearson Correlation	.256*	.117	.279*	.336*	.386*	.207	.232	.303*	.758*	1	.557**
	Sig. (2-tailed)	.034	.338	.020	.005	.001	.088	.055	.011	.000		.000
	N	69	69	69	69	69	69	69	69	69	69	69
TOTAL	Pearson Correlation	.763*	.608*	.693*	.689*	.705*	.681*	.723*	.680*	.526*	.557*	1
	Sig. (2-tailed)	.000	.000	.000	.000	.000	.000	.000	.000	.000	.000	
	N	69	69	69	69	69	69	69	69	69	69	69

\*\* . Correlation is significant at the 0.01 level (2-tailed).

\* . Correlation is significant at the 0.05 level (2-tailed).



	N	69	69	69	69	69	69	69	69	69	69	69
Y7	Pearson Correlation	.303*	.300*	.112	.426*	.457*	.495*	1	.526*	.375*	.713*	.679**
	Sig. (2-tailed)	.011	.012	.361	.000	.000	.000		.000	.002	.000	.000
	N	69	69	69	69	69	69	69	69	69	69	69
Y8	Pearson Correlation	.384*	.428*	.087	.292*	.420*	.337*	.526*	1	.436*	.582*	.643**
	Sig. (2-tailed)	.001	.000	.478	.015	.000	.005	.000		.000	.000	.000
	N	69	69	69	69	69	69	69	69	69	69	69
Y9	Pearson Correlation	.364*	.293*	.424*	.443*	.394*	.468*	.375*	.436*	1	.438*	.666**
	Sig. (2-tailed)	.002	.015	.000	.000	.001	.000	.002	.000		.000	.000
	N	69	69	69	69	69	69	69	69	69	69	69
Y10	Pearson Correlation	.487*	.481*	.340*	.585*	.442*	.483*	.713*	.582*	.438*	1	.804**
	Sig. (2-tailed)	.000	.000	.004	.000	.000	.000	.000	.000	.000		.000
	N	69	69	69	69	69	69	69	69	69	69	69
TOTAL	Pearson Correlation	.750*	.712*	.588*	.753*	.694*	.694*	.679*	.643*	.666*	.804*	1
	Sig. (2-tailed)	.000	.000	.000	.000	.000	.000	.000	.000	.000	.000	
	N	69	69	69	69	69	69	69	69	69	69	69

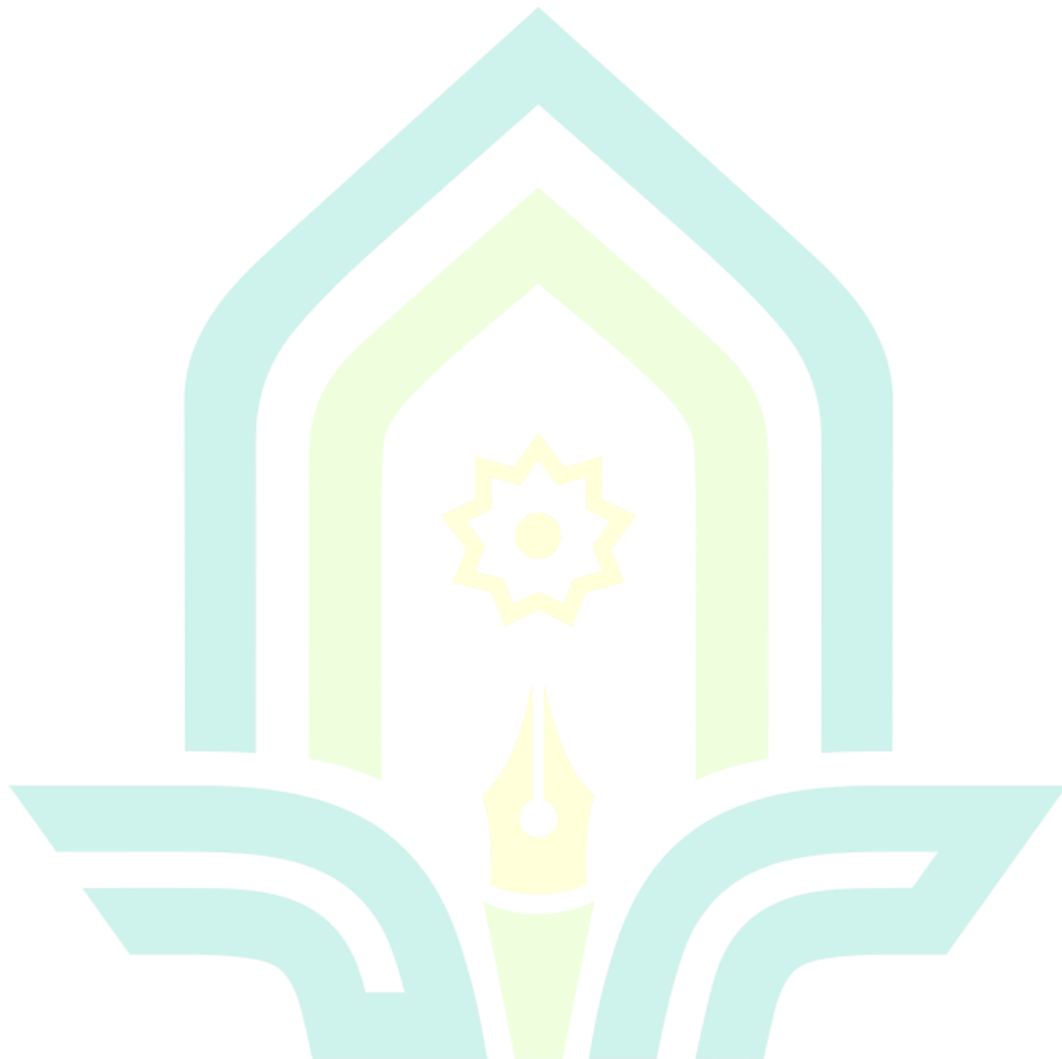
\*\* . Correlation is significant at the 0.01 level (2-tailed).

\* . Correlation is significant at the 0.05 level (2-tailed).

Lampiran 7 UJI RELIABILITAS X

**Reliability Statistics**

Cronbach's Alpha	N of Items
.858	10





## Lampiran 8 UJI RELIABILITAS Y

### Reliability Statistics

Cronbach's	
Alpha	N of Items
.882	10



## Lampiran 9 Uji NORMALITAS

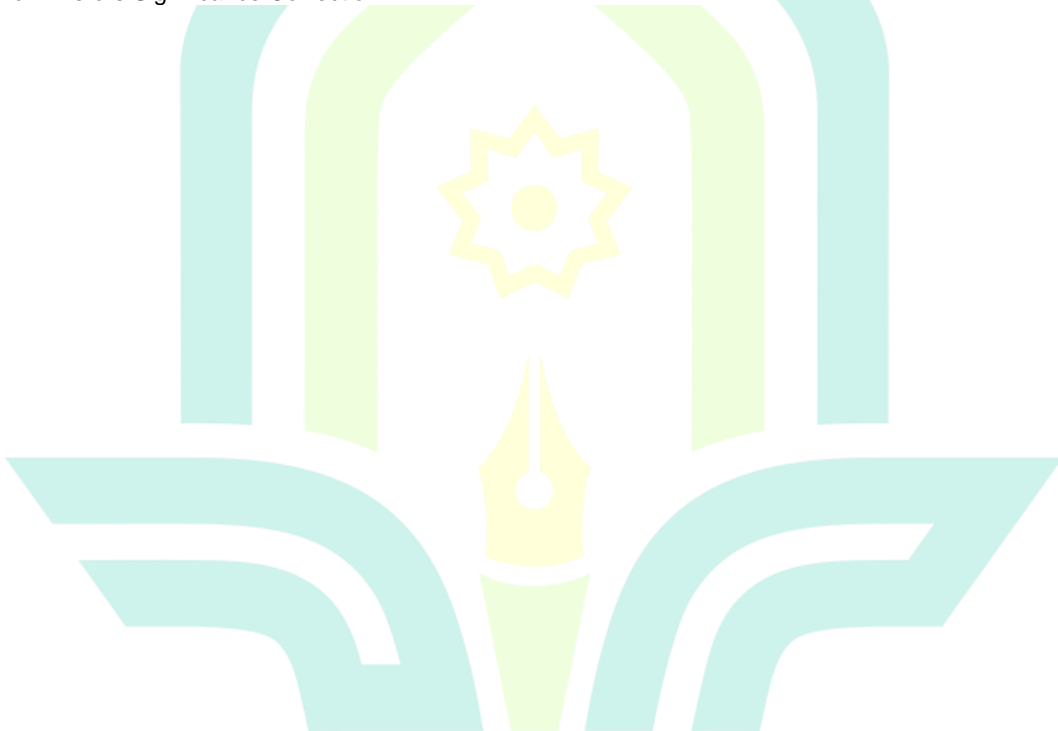
### One-Sample Kolmogorov-Smirnov Test

		Unstandardized Residual
N		69
Normal Parameters <sup>a,b</sup>	Mean	.0000000
	Std. Deviation	6.02754457
Most Extreme Differences	Absolute	.114
	Positive	.108
	Negative	-.114
Test Statistic		.114
Asymp. Sig. (2-tailed)		.026 <sup>c</sup>

a. Test distribution is Normal.

b. Calculated from data.

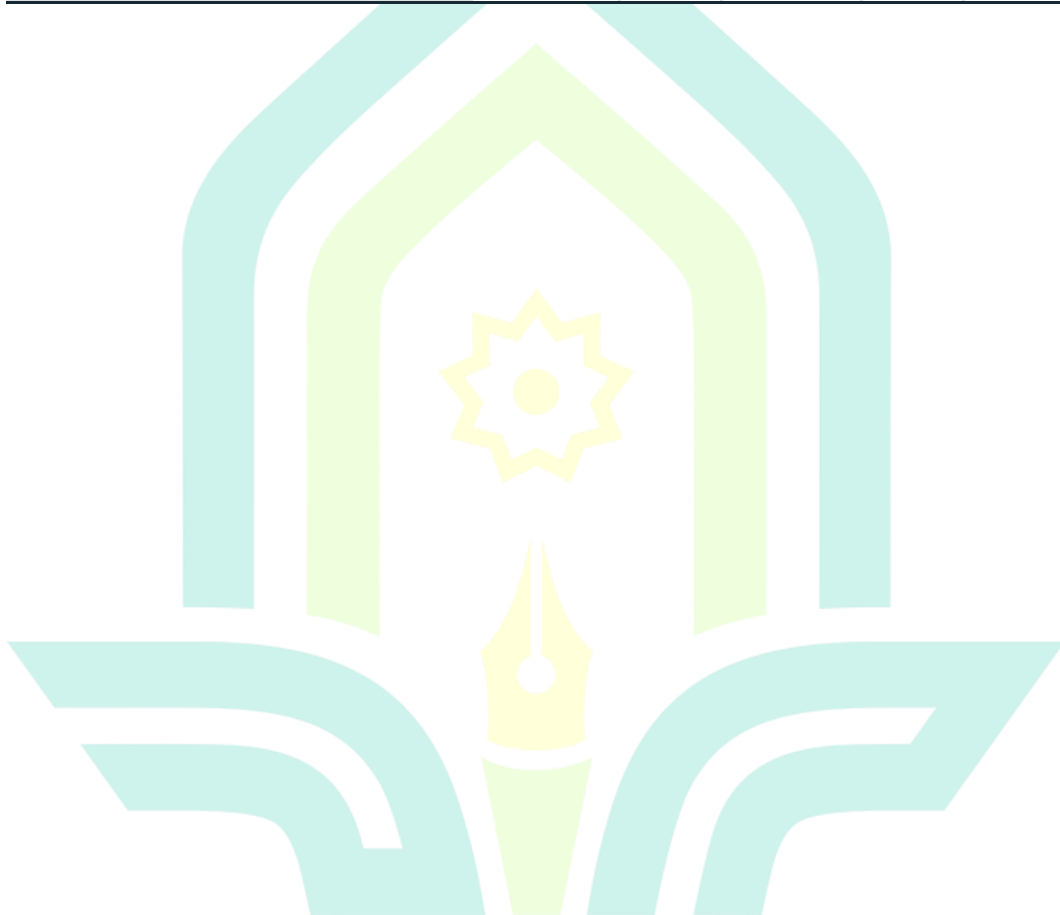
c. Lilliefors Significance Correction.



Lampiran 10 UJI LINIERITAS

**ANOVA Table**

			Sum of Squares	df	Mean Square	F	Sig.
Y * X	Between	(Combined)	995.583	24	41.483	1.109	.373
	Groups	Linearity	170.458	1	170.458	4.558	.038
		Deviation from Linearity	825.125	23	35.875	.959	.530
	Within Groups		1645.403	44	37.396		
	Total		2640.986	68			



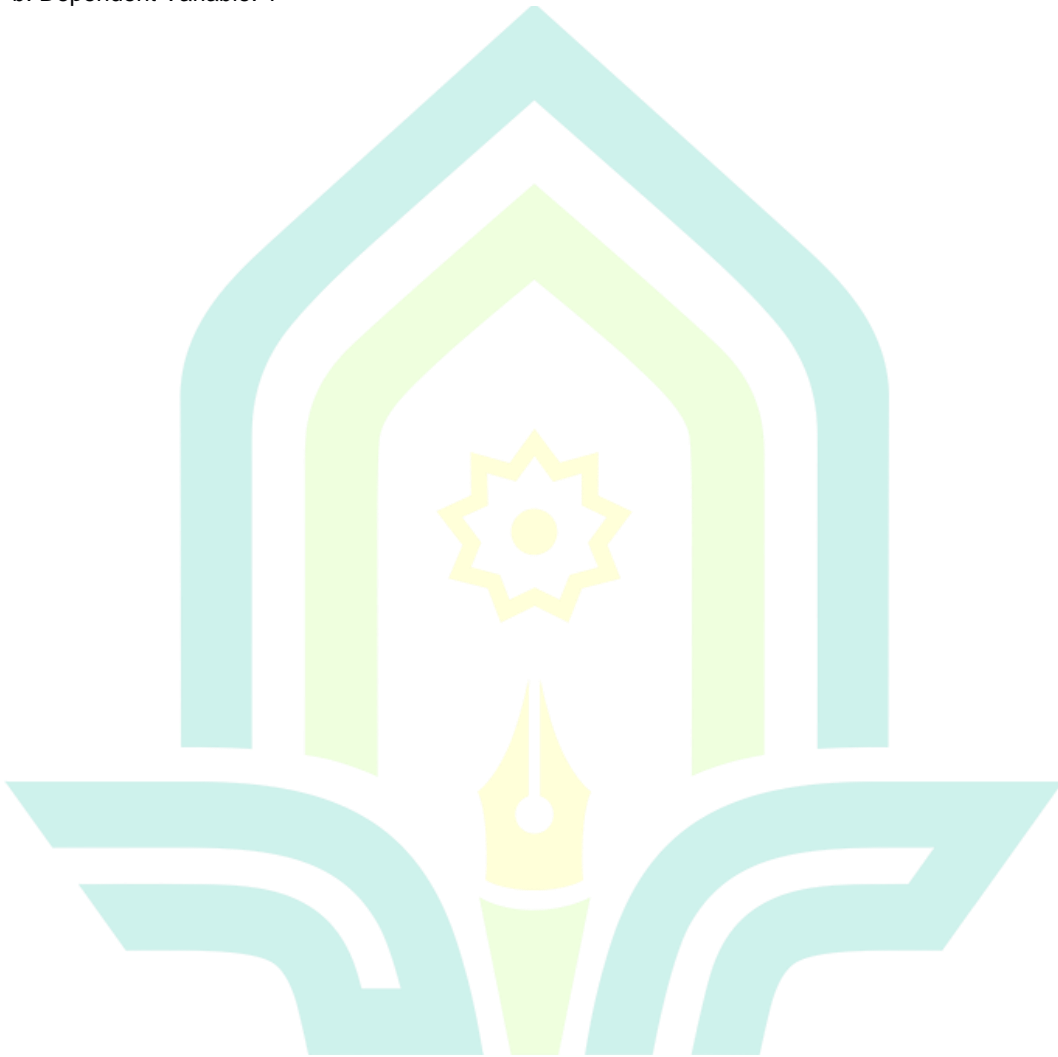
## Lampiran 11 Uji Determinasi

### Model Summary<sup>b</sup>

Model	R	R Square	Adjusted R Square	Std. Error of the Estimate
1	.254 <sup>a</sup>	.065	.051	6.072

a. Predictors: (Constant), X

b. Dependent Variable: Y

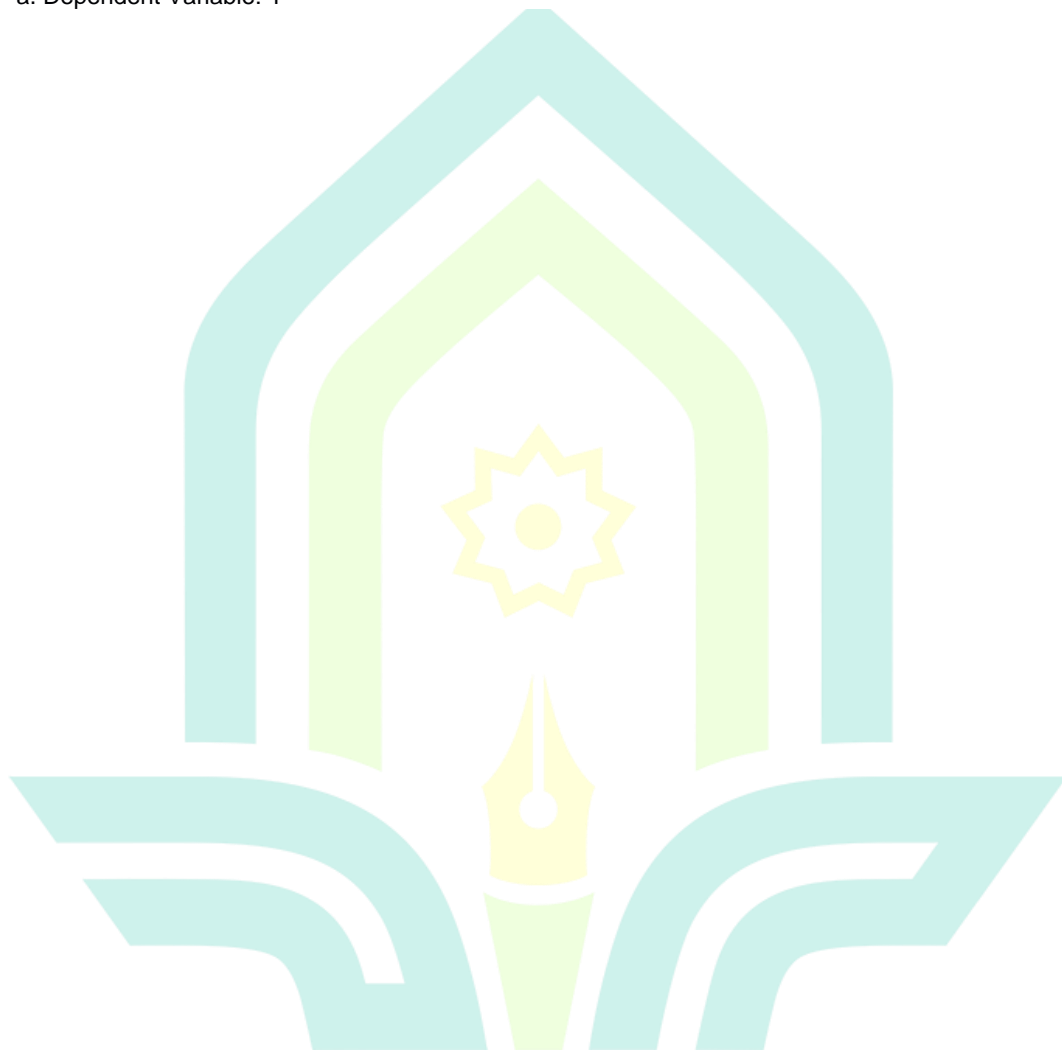


## Lampiran 12 UJI REGRESI LINIER

### Coefficients<sup>a</sup>

Model		Unstandardized Coefficients		Standardized	t	Sig.
		B	Std. Error	Coefficients		
				Beta		
1	(Constant)	26.172	5.082		5.150	.000
	X	.277	.129	.254	2.150	.035

a. Dependent Variable: Y



Lampiran 13 DOKUMENTASI

